

Hippos (Sussita) Excavations 2011 – 12th Season

Daily Log + Drawing

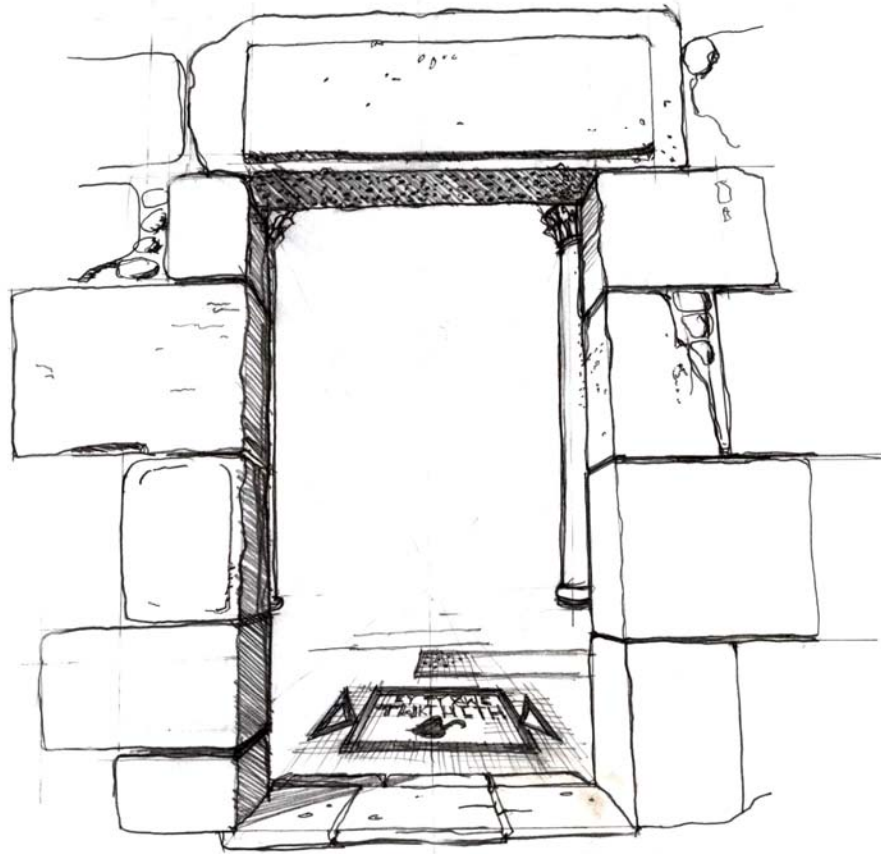
Date: 20 July 11 Area: NIP Manager: Schuler

Squares	XX/YY0	F9
Loci	1930	1928
Baskets	2447	2448
Walls	1252, 1298, 1913, 1922	
Floors		

1) Northeast Zone

a) Continued work in Square XX99.

- i) Goal = Clarify more of Cardo 4 to the north and a possible entrance into the garden to the west.
- ii) Starting elevation = 129.17
- iii) Ending elevation = 129.17
- iv) Cleaning mosaic
- v) Cleaned the inscription. There is a leaf below the inscription, with a stem to the right.
- vi) The inscription is 97.5 cm wide counting the dovetail handles with the main frame 67 cm wide. It is 51 cm tall. The letters are 6-6.5 cm tall. The leaf is 11 x 17 cm. There are 41 tesserae/dm².
- vii) We speculate that W1922 and its staircase are a later addition. The column at the west end of W1922 and the column in the balk are on a line parallel to W1298 and likely provided a covering for the entrance mosaic.



b) Continued work in Square XX/yy0.

i) Goal = Excavate NE hall of peristyle house

ii) Basket = 2447 (Mixed BYZ and EROM pottery; pipe fragments; 100 BC – 600 CE)

iii) Starting elevation = 130.07

iv) Ending elevation = 129.85

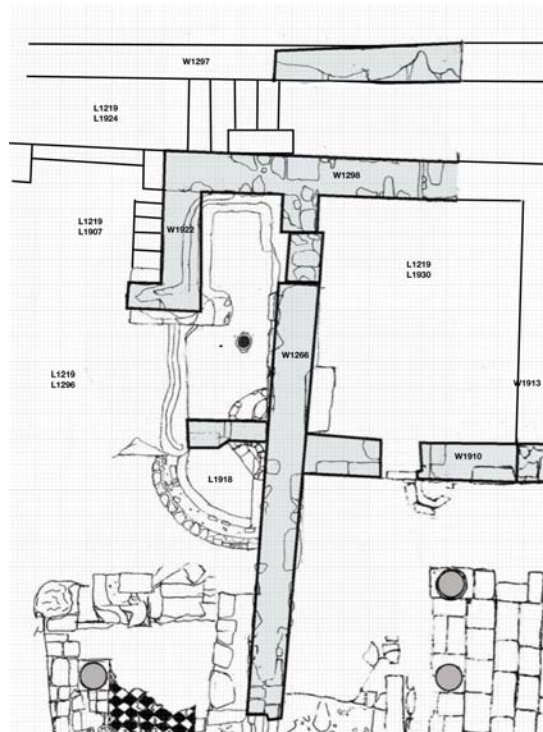
v) Soil is Horizon B.

vi) Removed fill to the level of the mosaic floor in parts of the square

vii) There is a catch basin pear-shaped (24x30) next to the east wall 110 cm from the SE corner.

viii) There is some kind of stone fixture next to the north wall 110 cm wide and 50 cm from the west wall. At the end of the day, we are not yet sure of its eastern extent, as we were following mosaic floor near it.

- ix) #583 is an iron eye (Length: 4 cm; Shank width: 1 cm; Eye width: 1.5 cm)
- x) #584 is a pin fragment, Length: 4.3 cm, Thickness: .7 cm
- xi) In the center of the room 240 cm from the threshold is a drain tile going SW. The tile is 12 cm wide. It seems to be half round covered with plaster from the top floor. It sits above the level of the mosaic floor. We are tracing it to see if it went to the olive vat or to the cistern. We now posit that there are not three floors but two: a lower mosaic floor over which is laid drain tile. These tile were then held in place by a mud/plaster layer. Over the tiles and the Mud/plaster layer, a plaster floor was poured. It survives best next to the threshold.
- xii) In the SW corner is a small sedimentation? pool. A channel comes from the room, likely from the catch basin on the east wall. Another channel goes west under W1913, likely to the cistern. A third channel may go to the north along W 1910.
- xiii) The space gives mainly domestic jars and in its last phase may have had production usage in connection with the vat to the north. Its earliest phase may have come from the third century (coins and pottery)



2) Southwest Zone

- a) Continued work in Square F9.
- i) Goal = identify the structure and function of Building Complex Alpha
 - ii) Basket = 2448 (Occupational layer ?; restorable pieces of gritty cooking ware and Beisan jar ?; Islamic lamp with decoration ?; Indicative Wares CRS; 500 CE – 750 CE)
 - iii) Starting elevation = 129.10
 - iv) Ending elevation = 128.83
 - v) Soil is Horizon C.
 - vi) Removed over half of the fill next to W1252.
 - vii) Recovered a Brass Ring (#587). Ring is C-shaped and doesn't appear to be broken on the edges. Length from top of the C to its bottom: 3 cm; Thickness: .5 cm.
 - viii) Retrieved a small Corinthian capital from the fill (#586; Bottom: Diameter: 32 cm, Height: 41 cm; Top: Length: 50 cm. Width: 44 cm).
 - ix) A coin discovered (#558), a provincial coin of Caracalla (197-218)
 - x) #589 is a grinding wheel 31cm in diameter and 14 cm thick. The central hole is 4 cm in diameter but only penetrates the wheel partially (9 cm).

